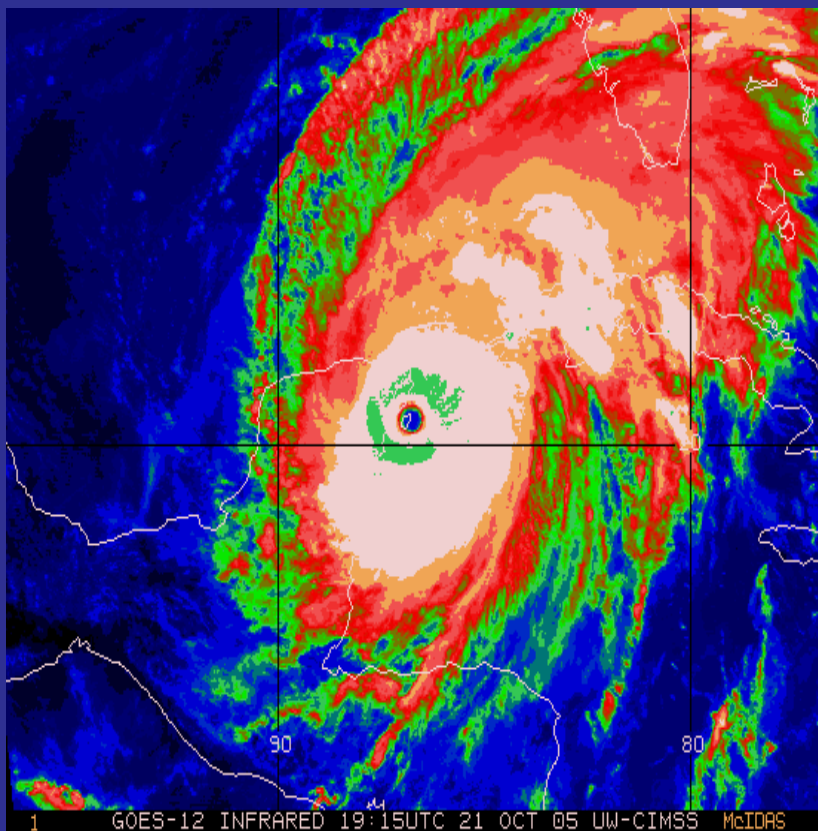


# WATERWAY RADIO & CRUISING CLUB

## *WEATHER REPORTERS NET GUIDE*



**March 2006**  
**Capt. Marti Brown, KF4TRG**

# WRCC NET WEATHER

WRCC Net weather immediately follows the Emergency & Priority Traffic section of the Net. Weather forecasts are read daily by assigned volunteers that are referred to as Weather Reporters. These volunteers are a vital element in the WRCC's effort to provide communications, weather, information and safety services to Net members and to our fellow amateur radio operators on boats.

The scheduling of the Weather Reporters is the responsibility of the Weather Coordinator. This position is appointed by the Commodore each year. The Weather Coordinator and the WRCC officers determine which weather products are read.

There are four general areas of weather that are covered; the Bahamas forecast with Nassau Harbour tidal information from the Nassau Meteorologic Office, the Tropical Weather Outlook from the National Hurricane Center in Miami, the Off-shore and the Florida Coastal forecasts from the National Weather Service. The following table illustrates the sections and the order of the forecast products as they are read.

Bahamas: South, Central, Northwest & Nassau Tides

Tropical: Tropical Weather Outlook/Storm Advisories

Offshore: Caribbean--Synopsis  
SW N Atlantic--Synopsis, Five Day Forecast  
Gulf of Mexico--Synopsis

Fla. Coastal: Jupiter Inlet to Deerfield Beach, Deerfield Beach to Ocean Reef out to the territorial waters of The Bahamas--  
Synopsis & 3 Day Forecast

## **Weather Reporters' Responsibilities**

The Bahamas weather is read daily by Carolyn Wardle, C6AGG, from BASRA in New Providence. A substitute volunteer is appointed to read the Bahamas weather by Carolyn in her absence. The Weather Reporters are responsible for reading the Tropical Outlook/Advisories, Offshore and Florida Coastal products. Note that the Tropical Weather Outlook and advisories are read during the Atlantic hurricane season which runs from June 1st through November 30th. The complete five day forecast from the SW N Atlantic Offshore product should be read. The Florida Coastal forecast should be read for days one through three. The reading of the Florida Coastal forecast for days four and five is done at the discretion of the Weather Reporters or by special request. See Appendix A for examples of these forecasts and the sections that are read.

The WRCC Net schedule will be sent to all Weather Reporters by the last week of the month. Any changes in your availability should be communicated to the Weather Coordinator as soon as possible. If you are able to obtain or recommend a replacement, you should notify the Weather Coordinator as well. Should you experience difficulties with your rig or your Internet connection the morning you are scheduled to report the weather, you can either call the Net Control Station (NCS) before the Net or telephone the Weather Coordinator. Let them know about your problem as soon as possible so that a replacement can be found.



*Sunset, Boot Key Harbor 2004*

## Weather Reporting Tips

In this section we'll look at some tips that will help make the job of weather reporting more fun and enjoyable. These tips have been compiled by some of the WRCC's more seasoned volunteers.

### Gathering The Weather--Internet Sources

All Weather Reporters will need to have access to the Internet. The Weather Coordinator is responsible for keeping an up-to-date list of Internet addresses for the various weather products. This list will be posted and updated as necessary by the Weather Coordinator on the WRCC WEB site; <http://www.waterwayradio.net>. See Appendix B for some primary and alternative sources for accessing these reports. Should you need clarification of an *Offshore* weather forecast, you can telephone the National Weather Service until 7 AM and talk to the individual that generated the forecast. After 7 AM, the oncoming forecaster can be of assistance as well. Note that they are very helpful and delighted to hear from us folks in the "field!" The NWS Offshore Weather Forecast phone number is 305-229-4424.

### Gathering The Weather--Date & Time Stamps

The tropical storm/hurricane advisories are generally posted after 5:30 AM and an intermediate advisory is available shortly after 8:00 AM Eastern. The majority of the offshore and coastal weather products are posted on the Internet after 5:30 AM Eastern. The exception is the Gulf of Mexico product that is posted at 4:30 AM Central. Sometimes these products can be late getting posted to the Internet. It's important to scrutinize the date and time stamp for each of the weather products or you may find yourself reading last evening's forecast!

If you are unable to obtain the latest forecast advisory on the primary Internet sites, you can often find it using one of the alternative sites. When all else fails try doing a Google search. Should a weather product not be available at Net time on either sites, don't panic! Call the Net Control Station (NCS) be-

fore the Net starts and inform him or her of the problem. The WRCC Net schedule is published monthly. More often than not, the weather product will be posted when you are in the middle of reading what you have during the weather portion of the Net. Often another WRCC member will gather the missing forecast for you while you are reading the weather. The NCS will decide how to handle the missing information.

### **Preparing To Read The Weather**

Weather forecast data can often be confusing. It is important that you understand the forecasts so that you can communicate them effectively. We suggest that you copy the forecasts to a word processing program, reformat them (delete items that aren't read) and print them out.

Read the weather forecasts before you report them on the Net. Often the National Weather Service leaves out words such as, "a, an, the, and," that can make the report more understandable if you insert them.

If the report is complex, plot it out so that you can answer any questions that might arise. Often the location of a Cold Front is referred to several times in a forecast. Plan to make your listeners aware of a notable weather system's position before you read the forecast so you don't have to keep repeating its location.

### **Propagation Issues--Can You Hear Me Now?**

Weather Reporters must have a signal that can be heard by those members who need to hear it--especially in the Bahamas. Turn on your radio a few minutes before the Net and ask for a radio check from someone in the Bahamas. If you are not being heard in the Bahamas, tell the NCS. The North and South relays and/or NCS should have copied the weather and be able to assist.

## **Reading The Weather Forecasts--General**

Slow down! Folks are furiously writing what they hear, often in-between static crashes and local interference. You will need to read the information slowly enough for people to copy. Watch that morning coffee intake!

Take a breath! Plan to read small portions of the forecast product and then say, “break, more to follow” and then release the mike and pause for a few seconds. If there is an emergency while you are reading the weather, or if someone needs clarification about what you’ve read, you will be able to be alerted in short order.

Spell it out! Be sure to read each Latitude and Longitude number in the forecast individually. Many numbers, such as 15 and 50, sound alike. When you have double digit numbers such as, 15.15 N & 50.50 W, read them like this; “one, five, decimal one, five, North and five, zero, decimal five zero West.”

## **Reading The Weather Forecasts--Preamble**

Before you begin reading the weather forecasts, identify yourself with your call sign and name. Then state that, “All of the weather I will read is from the National Weather Service in Miami copied earlier this morning.” This will help you avoid repeating the forecast source and time stamp for each product.

## **Tropical Outlook/Hurricane Advisories**

Hurricane season in the Atlantic basin runs from June 1st through November 30th. During this time the Weather Reporters will read the Tropical Weather Outlook. Should a Tropical Depression, Storm or a Hurricane be active in the Atlantic basin in an area of interest to the WRCC members, the Weather Reporters will also read the latest advisory. If there are no tropical weather systems brewing, then you should skip the outlook and read the following, “There are currently no active tropical systems, and tropical storm formation is not expected through...” See Appendix A.

## **The Offshore Forecasts**

### **Caribbean Sea & SW N Atlantic**

The synopsis for the Caribbean Sea is the only portion of this product that is routinely read. The entire SW North Atlantic product, including the synopsis and the five day forecast, are read. See Appendix A for more details and examples.

### **The Gulf of Mexico**

The Synopsis for the Offshore waters of the Gulf of Mexico is the only portion of this forecast that is read. See Appendix A for more information.

## **The Coastal Weather Forecasts**

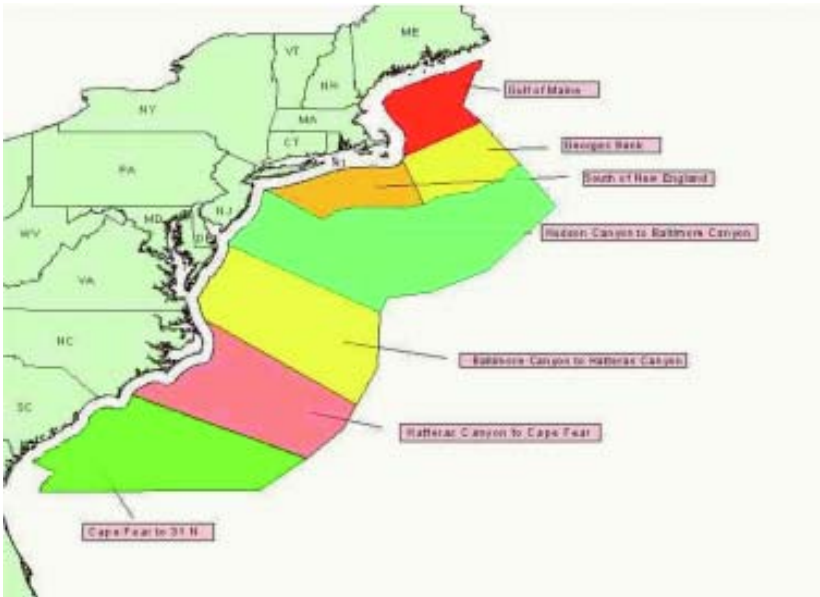
### **South Florida Coastal**

The weather that is read during the Net from the South Florida Coastal forecast includes two sections; Jupiter Inlet to Deerfield Beach and Deerfield Beach to Ocean Reef, out to the territorial waters of The Bahamas. If the weather forecasts are the same, try and combine them. Use your own discretion as to whether or not you read the fourth and fifth day forecasts.

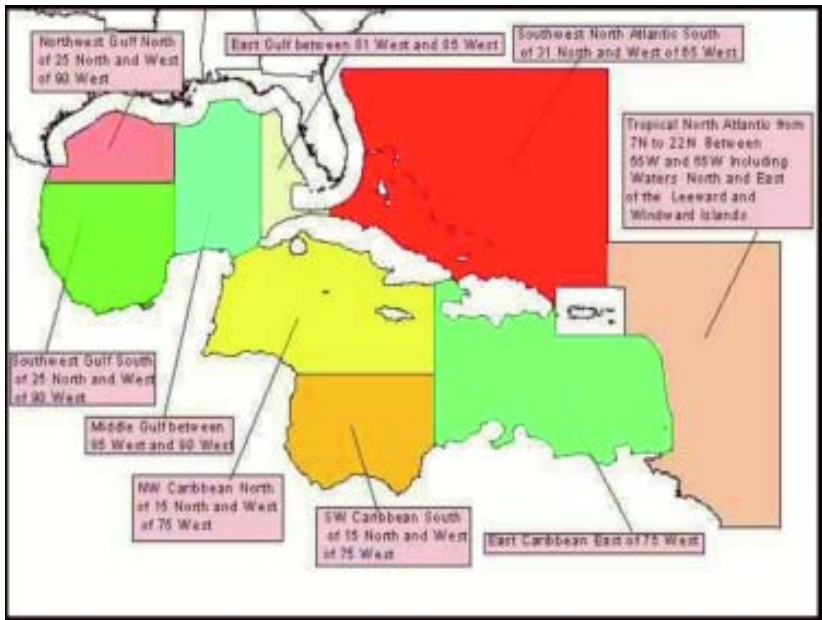
Where possible, try to condense any redundant information. If winds will remain the same speed and direction for the next three days condense the forecast. An example might be, "Winds SE 15-20 knots for Friday, Saturday and Sunday," instead of reading each day individually. See Appendix A.



*Waterspout, Green Turtle Cay White Sound, Abaco*



**Figure 1. NE US Forecast Zones**



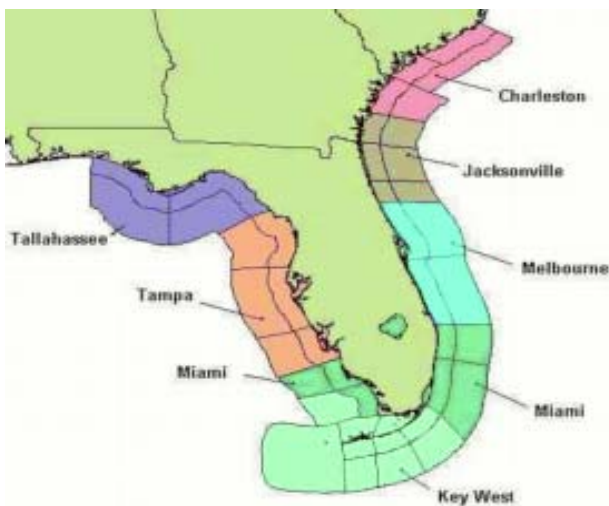
**Figure 2. SW N Atlantic, E, SW & NW Caribbean, Tropical N Atlantic & Gulf of Mexico Forecast Zones**

## Special Weather Forecast Requests

Occasionally, Net members will request forecast products that are not routinely read during the Net. The WRCC asks that stations requesting these forecast products provide the Net with at least a one day notice. The requesting station can contact the Weather Coordinator and Weather Reporters by E-mail, [weather@waterwayradio.net](mailto:weather@waterwayradio.net), or during the Net. The Weather Reporters will then plan to gather the additional forecast(s) and have them ready to read at Net time.

If a station requests a special weather forecast during the Net, the NCS will determine where and when it will be read to the requesting station. Depending upon how busy the Net is that morning and how lengthy the forecast is, the NCS may direct you to take the requesting station to another frequency. Every effort should be made to accommodate the requesting station(s).

Figures 1 and 2, on the previous page, illustrate the East coast Offshore forecast zones and Figure 3, the Florida Coastal forecast zones from the National Weather Service.



*Figure 3. Florida Coastal Forecast Zones*

## **Become A Weather Reporter**

The WRCC Net is staffed by a dedicated group of volunteers. One of the easiest ways to get involved is to become a Weather Reporter. Contact the Weather Coordinator to offer your valuable services! You can call the Weather Coordinator during the WRCC Net or send an E-mail with your availability and contact information to:

[vicecomm@waterwayradio.net](mailto:vicecomm@waterwayradio.net)

Don't be shy. Do it today! You'll be glad you did.



# APPENDIX A

## READING THE WEATHER

### Reading The Weather Forecasts--Preamble

Before you begin reading the weather forecasts, identify yourself with your call sign and name. Then state that, “All of the weather I will read is from the National Weather Service in Miami, copied earlier this morning.” This will help you avoid repeating the forecast source and time stamp for each product.

### Tropical Weather Outlook

This report is read from June 1st through November 30th. If there is an active Tropical Depression, Storm or a Hurricane in the area of interest to WRCC members, then the Tropical Storm/Hurricane Advisory should also be read. In the example below, TS Epsilon is of no concern to WRCC members and so the advisory would not be read. You might mention briefly that it exists. Should there be no tropical weather systems brewing, (as in the example below), then you should skip the outlook and read the following, “There are currently no active tropical systems, and tropical storm formation is not expected through Thursday” See Appendix C for information on the Saffir-Simpson hurricane scale and definitions of Tropical Storm and Hurricane Watches & Warnings.

000-ABNT20-KNHC-010315-TWOAT

TROPICAL WEATHER OUTLOOK

NWS-TPC/NATIONAL HURRICANE CENTER MIAMI FL

1030 PM EST WED NOV 30 2005

FOR THE NORTH ATLANTIC...CARIBBEAN SEA AND THE GULF OF MEXICO... THE NATIONAL HURRICANE CENTER IS ISSUING ADVISORIES ON TROPICAL STORM EPSILON... LOCATED OVER THE CENTRAL ATLANTIC ABOUT 700 MILES EAST-SOUTHEAST OF BERMUDA AND ABOUT 1615 MILES WEST-SOUTHWEST OF THE AZORES ISLANDS. ELSEWHERE... TROPICAL STORM FORMATION IS NOT EXPECTED THROUGH THURSDAY.

TODAY IS THE OFFICIAL END OF THE 2005 ATLANTIC HURRICANE SEASON...AND THIS IS THE LAST TROPICAL WEATHER OUTLOOK

~~OF THE SEASON. ATLANTIC TROPICAL WEATHER OUTLOOKS WILL RESUME ON JUNE 1 2006. WHILE THIS IS THE LAST OUTLOOK...ADVISORIES ON TROPICAL STORM EPSILON WILL CONTINUE UNTIL THE STORM DISSIPATES.~~

~~FORECASTER BEVEN \$\$~~

## **Tropical Storm/Hurricane Advisories**

Below is an example of a Hurricane Advisory. The portions that would be read by the Weather Reporters are highlighted in blue and the items to leave out are lined through.

~~ZGZG MIATCMAT4 ALL~~

~~TTAA00 KNHC DDHHMM~~

**HURRICANE WILMA FORECAST/ADVISORY NUMBER 30**  
~~NWS TPC/NATIONAL HURRICANE CENTER MIAMI FL~~  
~~AL242005~~

~~2100Z SAT OCT 22 2005~~

**AT 5 PM EDT...2100Z...A HURRICANE WATCH HAS BEEN ISSUED ALONG THE WEST COAST OF FLORIDA FROM LONGBOAT KEY SOUTHWARD...AND ALONG THE EAST COAST OF FLORIDA FROM TITUSVILLE SOUTHWARD. A HURRICANE WATCH REMAINS IN EFFECT FOR ALL OF THE FLORIDA KEYS...INCLUDING THE DRY TORTUGAS AND FLORIDA BAY. AT 5 PM EDT...A TROPICAL STORM WATCH HAS BEEN ISSUED ALONG THE WEST COAST OF FLORIDA FROM NORTH OF LONGBOAT KEY NORTHWARD TO STEINHATCHEE RIVER... AND ALONG THE EAST COAST OF FLORIDA FROM NORTH OF TITUSVILLE NORTHWARD TO FERNANDINA BEACH. A HURRICANE WARNING REMAINS IN EFFECT FROM SAN FELIPE TO CHETUMAL ON THE YUCATAN PENINSULA...INCLUDING COZUMEL AND THE NEARBY ISLANDS. A TROPICAL STORM WARNING AND A HURRICANE WATCH REMAIN IN EFFECT FROM WEST OF SAN FELIPE TO CELESTUN.**

**AT 5 PM EDT...THE GOVERNMENT OF CUBA HAS ISSUED A HURRICANE WARNING FOR THE PROVINCES OF CIUDAD DE LA HABANA...LA HABANA...AND PINAR DEL RIO. A TROPICAL STORM WARNING IS IN EFFECT FOR**

THE ISLE OF YOUTH. A HURRICANE WATCH REMAINS IN EFFECT FOR THE PROVINCE OF MATANZAS. A HURRICANE WARNING MEANS THAT HURRICANE CONDITIONS ARE EXPECTED WITHIN THE WARNING AREA WITHIN THE NEXT 24 HOURS. PREPARATIONS TO PROTECT LIFE AND PROPERTY SHOULD BE RUSHED TO COMPLETION. A HURRICANE WATCH MEANS THAT HURRICANE CONDITIONS ARE POSSIBLE WITHIN THE WATCH AREA...GENERALLY WITHIN 36 HOURS.

A TROPICAL STORM WARNING MEANS THAT TROPICAL STORM CONDITIONS ARE EXPECTED WITHIN THE WARNING AREA WITHIN THE NEXT 24 HOURS. A TROPICAL STORM WATCH MEANS THAT TROPICAL STORM CONDITIONS ARE POSSIBLE WITHIN THE WATCH AREA...GENERALLY WITHIN 36 HOURS.

HURRICANE CENTER LOCATED NEAR 21.4N 87.1W AT 22/2100Z POSITION ACCURATE WITHIN 15 NM PRESENT MOVEMENT TOWARD THE NORTH OR 360 DEGREES AT 2 KT. ESTIMATED MINIMUM CENTRAL PRESSURE 957 MB EYE DIAMETER 75 NM MAX SUSTAINED WINDS 85 KT WITH GUSTS TO 105 KT.

64 KT..... 75NE 75SE 50SW 75NW.

50 KT.....120NE 100SE 75SW 100NW.

34 KT.....175NE 175SE 120SW 150NW.

12 FT SEAS..375NE 300SE 100SW 300NW.

WINDS AND SEAS VARY GREATLY IN EACH QUADRANT. RADII IN NAUTICAL MILES ARE THE LARGEST RADII EXPECTED ANYWHERE IN THAT QUADRANT.

REPEAT...CENTER LOCATED NEAR 21.4N 87.1W AT 22/2100Z. AT 22/1800Z CENTER WAS LOCATED NEAR 21.2N 87.1W

FORECAST VALID 23/0600Z 21.9N 86.8W

MAX WIND 95 KT...GUSTS 115 KT.

64 KT... 75NE 75SE 50SW 75NW.

50 KT...120NE 100SE 75SW 100NW.

34 KT...175NE 175SE 120SW 150NW.

FORECAST VALID 23/1800Z 23.1N 85.7W  
MAX WIND 100 KT...GUSTS 120 KT.  
~~64 KT... 75NE 75SE 50SW 75NW.~~  
~~50 KT...120NE 100SE 75SW 100NW.~~  
~~34 KT...200NE 200SE 125SW 200NW.~~

FORECAST VALID 24/0600Z 24.9N 83.5W  
MAX WIND 95 KT...GUSTS 115 KT.  
~~64 KT... 75NE 75SE 40SW 50NW.~~  
~~50 KT...125NE 125SE 60SW 75NW.~~  
~~34 KT...200NE 200SE 125SW 200NW.~~

FORECAST VALID 24/1800Z 27.8N 79.6W  
MAX WIND 80 KT...GUSTS 100 KT.  
~~50 KT...125NE 125SE 60SW 75NW.~~  
~~34 KT...200NE 225SE 125SW 150NW.~~

FORECAST VALID 25/1800Z 38.0N 69.0W  
EXTRATROPICAL  
MAX WIND 55 KT...GUSTS 65 KT.  
~~50 KT...125NE 125SE 60SW 75NW.~~  
~~34 KT...200NE 225SE 125SW 150NW.~~

EXTENDED OUTLOOK. NOTE...ERRORS FOR TRACK  
HAVE AVERAGED NEAR 250 NM ON DAY 4 AND 325 NM  
ON DAY 5...AND FOR INTENSITY NEAR 20 KT EACH DAY.  
OUTLOOK VALID 26/1800Z 45.0N 58.0W EXTRATROPICAL  
MAX WIND 55 KT...GUSTS 65 KT.

OUTLOOK VALID 27/1800Z 49.0N 44.0W  
EXTRATROPICAL  
MAX WIND 55 KT...GUSTS 65 KT.

~~REQUEST FOR 3 HOURLY SHIP REPORTS WITHIN 300  
MILES OF 21.4N 87.1W~~

~~NEXT ADVISORY AT 23/0300Z FORECASTER KNABB  
\$\$~~

## Reading The Offshore Weather Forecasts

The Synopsis for the Caribbean Sea and Gulf of Mexico are the only portions of these forecasts that are routinely read. The entire SW N Atlantic Synopsis and Forecast for the five day period are read. Figure 1 illustrates all of the Offshore Forecast Zones that are available for the Eastern, SW & NW Caribbean, SW N Atlantic, Tropical North Atlantic and The East, NW, SW & Middle Gulf of Mexico.

### Caribbean Sea & SW N Atlantic Forecasts

The following is an example of the Offshore weather forecasts for the Caribbean Sea and the SW N Atlantic. The blue text is read and the text that is lined through is omitted unless a special request for this weather has been received.

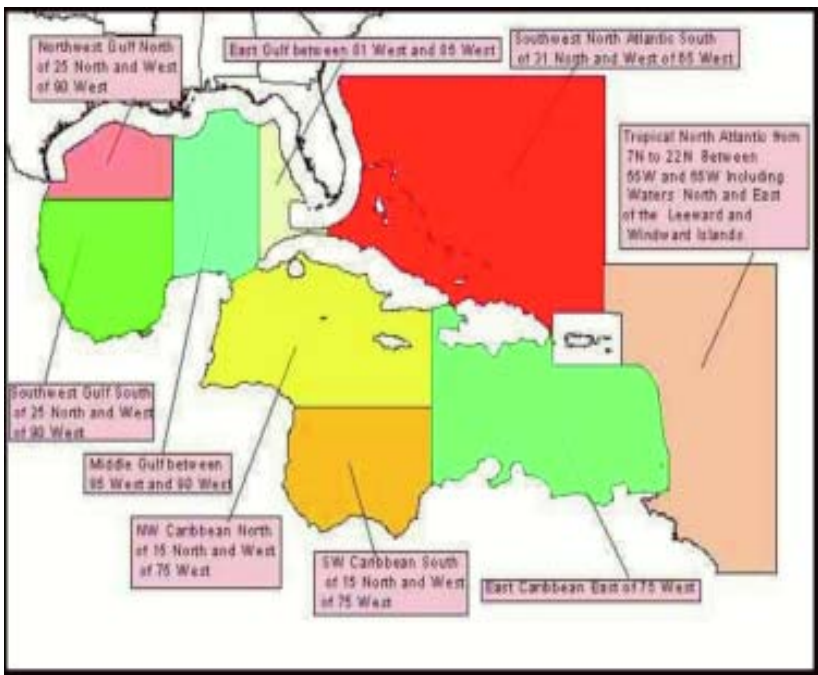


Figure 1.

*S Atlantic Basin, Caribbean Sea & Gulf of Mexico Forecast Zones*

000

FZNT23 KNHC 080944

OFFNT3

OFFSHORE WATERS FORECAST FOR THE SOUTHWEST  
AND TROPICAL NORTH ATLANTIC AND-CARIBBEAN SEA  
NWS TPC/NATIONAL HURRICANE CENTER MIAMI FL

430 AM EST THU DEC 08 2005

OFFSHORE WATERS FORECAST FOR THE CARIBBEAN SEA AND  
TROPICAL N ATL C FROM 7N TO 22N BETWEEN 55W AND 65W  
AMZ089-081530-

SYNOPSIS FOR CARIBBEAN SEA AND TROPICAL N ATL C  
FROM 7N TO 22N BETWEEN 55W AND 65W

430 AM EST THU DEC 08 2005

.SYNOPSIS...HIGH PRES N OF THE AREA WILL STRENGTHEN TODAY  
THROUGH FRI. THE HIGH WILL WEAKEN SAT THROUGH MON.

\$\$

AMZ082-081530-

NW-CARIBBEAN N OF 15N W OF 75W

430 AM EST THU DEC 08 2005

.TODAY...S OF 18N E OF 80W NE TO E WINDS 20 TO 25 KT. SEAS 7 TO  
9 FT. ELSEWHERE NE TO E WINDS 15 KT. SEAS 4 TO 6 FT. ISOLATED  
SHOWERS S OF 18N.

.TONIGHT THROUGH SAT...S OF 17N E OF 81W E WINDS 20 TO 25 KT.  
SEAS 8 TO 12 FT. ELSEWHERE NE TO E WINDS 10 TO 15 KT. SEAS 5  
TO 7 FT IN E SWELL S OF 20N AND 4 TO 5 FT N OF 20N.

.SUN...S OF 17N E OF 80W E WINDS 15 TO 20 KT. SEAS 7 TO 9 FT IN  
E SWELL. ELSEWHERE NE WINDS 10 TO 15 KT. SEAS 3 TO 5 FT N OF  
18N E OF 83W 3 TO 5 FT AND 5 TO 7 FT ELSEWHERE IN SWELL.

.MON...N TO NE WINDS 10 TO 15 KT. SEAS 5 TO 6 FT S OF 18N E OF  
82W AND 3 TO 5 FT ELSEWHERE.

\$\$

AMZ084-081530-

SW-CARIBBEAN S OF 15N W OF 75W

430 AM EST THU DEC 08 2005

TODAY AND TONIGHT...N OF 11N E OF 80W E WINDS 20 TO 25 KT.  
SEAS 8 TO 12 FT. N OF 11N W OF 80W NE TO E WINDS 15 TO 20 KT.  
SEAS 8 TO 10 FT WITH E SWELL. S OF 11N NE WINDS 15 KT. SEAS 6  
TO 8 FT IN NE SWELL.

.FRI AND FRI NIGHT...N OF 12N E OF 80W E WINDS 25 TO 30 KT.  
SEAS 10 TO 14 FT. N OF 12N W OF 80W NE TO E WINDS 20 TO 25 KT.  
SEAS 8 TO 12 FT WITH E SWELL. S OF 12N NE WINDS 15 KT. SEAS 6  
TO 9 FT IN NE SWELL.

.SAT...N OF 11N E WINDS 20 TO 25 KT. SEAS SUBSIDING TO 8 TO 12 FT. S OF 11N E WINDS 10 KT. SEA 6 TO 8 FT IN NE SWELL.

.SUN...NE WINDS DECREASING TO 10 TO 15 KT. SEAS 6 TO 8 FT IN E SWELL.

.MON...NE TO E WINDS 10 TO 15 KT. SEAS 5 TO 7 FT IN NE SWELL.

\$\$

AMZ086-081530-

E CARIBBEAN E OF 75W TO LEEWARD AND WINDWARD ISLANDS  
430 AM EST THU DEC 08 2005

.TODAY...NE WINDS NE 20 TO 25 KT. SEAS 7 TO 9 FT...BUILDING 8 TO 11 FT THU. .TONIGHT AND FRI...E WINDS 25 TO 30 KT. SEAS 9 TO 13 FT BUILDING TO 10 TO 15 FT FRI.

.FRI NIGHT AND SAT...E WINDS 20 TO 25 KT DECREASING TO 20 KT SAT. SEAS 9 TO 13 FT...SUBSIDING TO 8 TO 11 FT SAT.

.SUN...E WINDS 15 TO 20 KT. SEAS SUBSIDING TO 7 TO 9 FT IN E SWELL. .MON...E WINDS 10 TO 15 KT. SEAS 5 TO 7 FT IN E SWELL.

\$\$

AMZ087-081530-

TROPICAL N ATLC FROM 7N TO 22N BETWEEN 55W AND 65W  
430 AM EST THU DEC 08 2005

.TODAY...FROM 12N TO 20N NE WINDS 20 TO 25 KT. SEAS 9 TO 12 FT. N OF 20N NE TO E WINDS 15 TO 20 KT. SEAS 7 TO 9 FT IN NE SWELL. S OF 12N

NE TO E 15 KT. SEAS 6 TO 8 FT IN E SWELL. SCATTERED SHOWERS AND ISOLATED TSTMS S OF 15N.

.TONIGHT AND FRI...FROM 10N TO 20N NE TO E WINDS 25 TO 30 KT. SEAS 10 TO 14 FT. N OF 20N NE TO E WINDS 20 TO 25 KT. SEAS 8 TO 10 FT. S OF 10N NE TO E WINDS 15 TO 20 KT. SEAS 9 TO 11 FT IN NE SWELL.

.FRI NIGHT AND SAT...N OF 18N E WINDS 15 TO 20 KT DECREASING TO 15 KT. SEAS 8 TO 11 FT IN NE SWELL. FROM 10N TO 18N E WINDS 20 TO 25 KT...DECREASING TO 20 KT SAT. SEAS 9 TO 11 FT. S OF 10N NE TO E WINDS 10 TO 15 KT. SEAS 8 TO 10 FT IN NE SWELL. .SUN...N OF 18N E WINDS 15 KT. SEAS 6 TO 8 FT WITH NE SWELL. S OF 18N E WINDS 20 KT. SEAS 7 TO 9 FT.

.MON...E WINDS 15 KT. SEAS 6 TO 8 FT IN E SWELL.

\$\$

~~AMZ088-081530-~~

SYNOPSIS FOR THE SW N ATLC INCLUDING THE BAHAMAS

~~430 AM EST THU DEC 08 2005~~

~~.SYNOPSIS...STATIONARY FRONT FROM 26N65W TO 27N80W WILL LIFT SLOWLY NWD AS A WARM FRONT AND EXTEND FROM 26N75W TO 31N80W BY TONIGHT.~~

~~COLD FRONT WILL MOVE OFF SE U.S. COAST EARLY FRI AND MOVE TO 31N69W TO 26N80W BY LATE FRI NIGHT THEN BECOME DIFFUSE ALONG 26N SAT.~~

~~SECOND COLD FRONT WILL MOVE OFF THE SE COAST U.S. SAT NIGHT AND EXTEND FROM 31N72W TO 26N80W SUN...AND FROM 27N65W TO THE STRAITS OF FLORIDA BY LATE MON.~~

~~\$\$ AMZ080-081530-~~

SW N ATLC S OF 31N W OF 65W INCLUDING BAHAMAS

~~430 AM EST THU DEC 08 2005~~

~~.TODAY...N OF FRONT W OF 70W NE TO E WINDS 25 TO 30 KT WITH GUSTS TO GALE FORCE. SEAS BUILDING 9 TO 14 FT. ELSEWHERE N OF FRONT NE WINDS 20 KT. SEAS 7 TO 9 FT. S OF FRONT ELY WINDS 15 TO 20 KT. SEAS 6 TO 8 FT E OF BAHAMAS AND 4 TO 6 FT W OF THE BAHAMAS. WIDELY SCATTERED SHOWERS ALONG FRONT.~~

~~.TONIGHT...N OF FRONT SE WINDS 25 TO 30 KT WITH GUSTS TO GALE FORCE. SEAS 10 TO 15 FT. ELSEWHERE N OF FRONT NE TO E WINDS 20 TO 25 KT. SEAS 8 TO 11 FT. S OF FRONT SE WINDS 15 TO 20 KT AND GUSTY. SEAS 7 TO 10 FT E OF BAHAMAS AND 5 TO 6 FT W OF BAHAMAS. WIDELY SCATTERED SHOWERS AND TSTMS ALONG AND N OF WARM FRONT.~~

~~.FRI AND FRI NIGHT...W OF FRONT NW WINDS 20 TO 25 KT BECOMING N TO NE AND DECREASING TO 15 KT FRI NIGHT. SEAS 8 TO 11 FT SUBSIDING 6 TO 9 FT FRI NIGHT. N OF 28N E OF FRONT SW WINDS 20 TO 25 KT. SEAS 8 TO 10 FT. FROM 25N TO 28N E OF FRONT SE TO S WINDS 15 KT. SEAS 7 TO 9 FT. S OF 25N E WINDS 15 TO 20 KT. SEAS 8 TO 10 FT IN E SWELL E OF BAHAMAS AND 4 TO 6 FT W OF BAHAMAS. SCATTERED SHOWERS AND TSTMS ALONG FRONT.~~

~~.SAT...N OF FRONT N TO NE WINDS 15 KT...BECOMING NE AND DECREASING 10 KT LATE. SEAS 6 TO 8 FT. S OF FRONT VARIABLE NE TO E WINDS 10 KT...EXCEPT E WINDS 15 KT S OF 22N. SEAS 6 TO 8 FT IN E SWELL E OF BAHAMAS AND 3 TO 4 FT W OF BAHAMAS.~~

~~.SUN...N OF 27N W WINDS INCREASING TO 20 TO 25 KT W OF FRONT. SEAS BUILDING TO 7 TO 10 FT LATE. FROM 25N TO 28N S TO SW WINDS 15 TO 20 KT. SEAS 5 TO 7 FT E OF BAHAMAS IN N SWELL AND 3 TO 4 FT W OF BAHAMAS. S OF 25N SE WINDS 15 KT. SEAS 5 TO 7 FT WITH NE SWELL E OF BAHAMAS AND 3 TO 4 FT W OF BAHAMAS.~~

.MON...NW OF FRONT AND E OF 72W NW WINDS 20 TO 25 KT...DECREASING TO 15 KT LATE. SEAS 8 TO 12 FT... SUBSIDING 7 TO 9 FT LATE. ELSEWHERE NW OF FRONT NW WINDS 15 KT...BECOMING N TO NE 10 KT OR LESS LATE. SEAS 6 TO 9 FT...SUBSIDING 5 TO 7 FT LATE. SE OF FRONT SE TO S WINDS 15 KT. SEAS 5 TO 6 FT. SCATTERED SHOWERS AND TSTMS ALONG FRONT.

## **The Gulf of Mexico Forecast**

The Synopsis for the Offshore waters of the Gulf of Mexico is the only portion of this forecast that is read. I have included the entire text so that should you receive a special request for additional Gulf of Mexico forecast information you will know where to find it.

~~000 FZNT24 KNHC 081439 OFFNT4~~

~~OFFSHORE WATERS FORECAST FOR THE GULF OF MEXICO  
NWS TPC/NATIONAL HURRICANE CENTER MIAMI FL~~

~~930 AM CST THU DEC 08 2005~~

~~OFFSHORE WATERS FORECAST FOR THE GULF OF MEXICO  
GMZ089-082130-~~

~~SYNOPSIS FOR THE GULF OF MEXICO~~

~~930 AM CST THU DEC 08 2005~~

~~-.SYNOPSIS...STATIONARY FRONT 28N83W 26N88W TO LOW PRES  
NEAR 27N91W 1016 MB WITH COLD FRONT TO 23N97W THEN FROM  
LOW PRES NEAR 29N87W 1014 MB TO 25N92W TO 18N94W THIS  
EVENING. GALE FORCE WINDS EXPECTED BEHIND THE FRONT W  
OF 94W. COLD FRONT WILL MOVE RAPIDLY AND EXTEND FROM FT  
MYERS FLORIDA TO 25N90W TO 19N94W BY FRI NIGHT AND WEAKEN  
ALONG 24N SAT. NEXT FRONT WILL MOVE OFF THE GULF COAST  
SAT NIGHT AND EXTEND FROM S FLORIDA TO 22N90W TO BAY OF  
CAMPECHE LATE SUN THEN MOVE SE OF AREA MON.~~

~~\$\$~~

~~GMZ080-082130-~~

~~NW GULF N OF 25N W OF 90W~~

~~INCLUDING FLOWER GARDEN BANKS NATIONAL MARINE  
SANCTUARY~~

~~930 AM CST THU DEC 08 2005~~

~~-.THIS AFTERNOON...S OF 27N W OF 94W N WINDS 25 TO 30 KT WITH  
HIGHER GUSTS. SEAS BUILDING 9 TO 13 FT. ELSEWHERE W OF  
FRONT N WINDS 20 TO 25 KT. SEAS 8 TO 10 FT. E OF FRONT NE TO E  
WINDS 10 TO 15 KT. SEAS 5 TO 7 FT IN E SWELL. SCATTERED  
SHOWERS AND TSTMS ALONG FRONT.~~

.TONIGHT AND FRI...N WINDS 25 TO 30 KT DECREASING TO 20 TO 25  
KT FRI. SEAS 9 TO 14 FT SUBSIDING 8 TO 12 FT IN N SWELL LATE  
FRI. .FRI NIGHT...N TO NE WINDS 15 TO 20 KT. SAT. SEAS 7 TO 9 FT.  
.SAT...N TO NE WINDS 10 TO 15 KT. SEAS SUBSIDING TO 3 TO 5 FT.  
.SUN...N TO NE WINDS 10 KT BECOMING NW TO N AND INCREASING  
TO 20 KT N OF FRONT. SEAS 3 TO 5 FT BUILDING TO 6 TO 8 FT.  
.MON...N TO NE WINDS 10 TO 15 KT BECOMING E 10 KT. SEAS 2 TO 4  
FT.

\$\$

GMZ082-082130-

SW GULF S OF 25N W OF 90W

930 AM CST THU DEC 08 2005

...GALE WARNING W OF 94W...

...GALE CONDITIONS EXPECTED W OF 94W FRI...

.THIS AFTERNOON...W OF FRONT NLY WINDS 30 TO 40 KT. SEAS  
BUILDING 10 TO 15 FT LATE. E OF FRONT NLY WINDS 10 KT OR LESS.  
SEAS 4 TO 6 FT IN NE SWELL. WIDELY SCATTERED SHOWERS ALONG  
FRONT.

.TONIGHT AND FRI...W OF FRONT NW TO N WINDS 30 TO 35 KT. SEAS  
10 TO 16 FT. E OF FRONT NE WINDS 10 TO 15 KT. SEAS 4 TO 6 FT.  
.FRI NIGHT AND SAT...W OF 93W NW WINDS 20 TO 30 KT DECREASING  
TO 15 TO 20 KT LATE SAT...EXCEPT 25 KT S OF 20N. SEAS 9 TO 14 FT  
SUBSIDING TO 8 TO 12 FT SAT. E OF 93W NE TO E WINDS 10 KT.  
SEAS 5 TO 7 FT IN NE SWELL.

.SUN...N TO NE WINDS 10 TO 15 KT BECOMING NW TO N 20 KT N OF  
FRONT LATE. SEAS 4 TO 6 FT BUILDING TO 6 TO 8 FT.

.MON...N TO NE WINDS 10 TO 15 KT BECOMING E TO SE LATE. SEAS  
4 TO 6 FT.

\$\$

GMZ084-082130-

MIDDLE GULF BETWEEN 85W AND 90W 930 AM CST THU DEC 08

2005 ...GALE WARNING N OF 28N...

.THIS AFTERNOON...N OF 28N NE TO E WINDS 30 TO 35 KT  
DECREASING TO 25 KT LATE. SEAS 9 TO 14 FT...SUBSIDING 8 TO 11  
FT LATE. S OF 28N SLY WINDS 10 TO 15 KT. SEAS 5 TO 7 FT IN NE  
SWELL. SCATTERED SHOWERS AND ISOLATED TSTMS N OF 25N.

.TONIGHT AND FRI...N OF 25N N TO NE WINDS 20 KT SHIFTING TO N  
AND INCREASING TO 25 TO 30 KT NW OF COLD FRONT. SEAS 8 TO  
12 FT. S OF 25N NE WINDS 10 TO 15 KT. SEAS 5 TO 7 FT IN NE SWELL.  
WIDELY SCATTERED SHOWERS ALONG FRONT.

.FRI NIGHT AND SAT...N OF FRONT NE WINDS 20 TO 25 KT  
DECREASING NE 15 KT LATE SAT. SEAS 7 TO 9 FT...SUBSIDING 4 TO  
6 FT LATE SAT. S OF FRONT N TO NE WINDS 10 TO 15 KT. SEAS 5 TO

6 FT IN NE SWELL. .SUN...N TO NE WINDS 10 KT BECOMING NW 20  
KT W OF FRONT LATE. SEAS 3 TO 5 FT BUILDING 5 TO 7 FT LATE.  
.MON...N TO NE WINDS 10 TO 15 KT. SEAS 2 TO 4 FT N OF 25N AND 4  
TO 6 FT S OF 25N.

\$\$

GMZ086-082130-

E GULF BETWEEN 81W AND 85W

930 AM CST THU DEC 08 2005

...GALE WARNING N OF 28N...

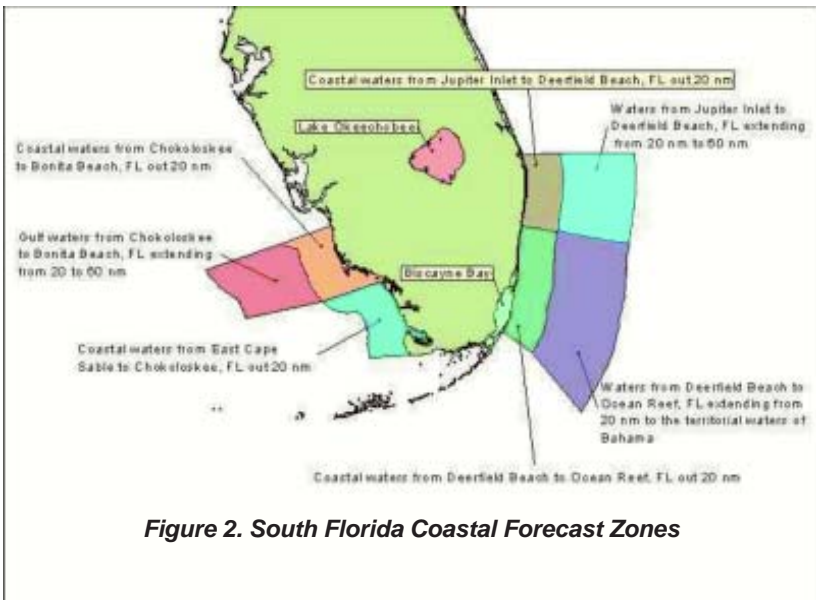
.THIS AFTERNOON AND TONIGHT...N OF 27N E WINDS 30 TO 35 KT  
EARLY BECOMING E TO SE 25 KT BY AFTERNOON. SEAS 8 TO 12  
FT...SUBSIDING TO 7 TO 10 FT BY AFTERNOON. S OF 27N SE TO S  
WINDS 10 TO 15 KT. SEAS 3 TO 5 FT. SCATTERED SHOWERS AND  
TSTMS N OF 27N.

.TONIGHT...N OF 28N SE WINDS 15 TO 20 KT. SEAS 6 TO 8 FT. S OF  
28N SE TO S WINDS 10 TO 15 KT. SEAS 3 TO 5 FT. SCATTERED  
SHOWERS AND TSTMS N OF 28N.

.FRI AND FRI NIGHT...NW OF FRONT N WINDS 20 TO 25 KT BECOMING  
NE 15 TO 20 KT FRI NIGHT. SEAS 6 TO 8 FT. SE OF FRONT VARIABLE  
WINDS 10 KT OR LESS. SEAS 2 TO 3 FT. SCATTERED SHOWERS N OF  
27N. .SAT...N OF 25N NLY WINDS 10 TO 15 KT. SEAS 2 TO 4 FT. S OF 25N  
NE WINDS DECREASING TO 10 KT. SEAS 3 TO 5 FT. .SUN...N OF 25N  
NW TO N WINDS 15 KT. SEAS 3 TO 5 FT. S OF 25N N TO NE WINDS 10  
TO 15 KT. SEA 3 TO 4 FT. .MON...N TO NE WINDS 10 TO 15 KT. SEAS 3  
TO 5 FT SUBSIDING TO 2 TO 4 FT. \$\$ FORECASTER DGS/COBB

## Reading The Coastal Weather Forecasts South Florida Coastal

Figure 2 is a graphic example of the South Florida Coastal Zones Forecast. It is made up of several forecasts of which only two are read. These two forecasts include a Northern Section, Jupiter Inlet to Deerfield Beach and a Southern Section, Deerfield Beach to Ocean Reef, out to the territorial waters of The Bahamas. If both weather forecasts are the same, try and combine them. Should, “chance of showers” be repeated consistently, as in the text example that follows, then summarize this for each section. For example you could say at the end of each forecast, “A slight chance of showers and thunderstorms are possible Thursday through Saturday.” Use your own discretion as to whether or not you read the fourth and fifth day forecasts--Sunday and Monday in the example forecast that follows.



**Figure 2. South Florida Coastal Forecast Zones**

Here is an example of the forecast for the South Florida Coastal Waters. Again, the sections that are read are in blue and those that are not routinely read are lined through.

~~FZUS52-KMFL-080809-CWFMFL~~

~~COASTAL WATERS FORECAST FOR SOUTH FLORIDA~~

~~NATIONAL WEATHER SERVICE MIAMI-FL~~

~~309-AM-EST-THU-DEC-8-2005~~

~~ATLANTIC COASTAL WATERS FROM JUPITER INLET TO OCEAN REEF OUT TO 60 NM AND GULF COASTAL WATERS FROM EAST CAPE SABLE TO CHOKOLOSKEE OUT 20 NM AND CHOKOLOSKEE TO BONITA BEACH OUT 60 NM...INCLUDING THE WATERS OF BISGAYNE BAY AND LAKE OKEECHOBEE.~~

~~AMZ600-GMZ606-081530-~~

~~SYNOPSIS FOR JUPITER INLET TO OCEAN REEF OUT TO 60 NM AND FOR EAST CAPE SABLE TO BONITA BEACH OUT TO 60 NM-309 AM EST THU DEC 8 2005~~

~~.SYNOPSIS...~~

~~A WARM FRONT OVER SOUTH FLORIDA WILL MOVE NORTHWARD INTO CENTRAL FLORIDA TODAY. THE FRONT WILL RETURN AS A COLD FRONT ON FRIDAY BEFORE BECOMING STATIONARY OVER THE AREA THIS WEEKEND.~~

~~\$\$~~

~~.GULF STREAM HAZARDS...SEAS TO 8 FEET THIS MORNING.~~

~~THE APPROXIMATE LOCATION OF THE WEST WALL OF THE GULF STREAM AS OF DEC 08, 2005 AT 1200 UTC...~~

~~-8 NAUTICAL MILES EAST OF FOWEY ROCKS.~~

~~-12 NAUTICAL MILES NORTHEAST OF PORT EVERGLADES.~~

~~-8 NAUTICAL MILES NORTHEAST OF LAKE WORTH.~~

~~THIS DATA COURTESY OF THE NAVAL OCEANOGRAPHIC OFFICE.~~

~~\$\$~~

~~AMZ650-670-081530-~~

~~/O-EXT.KMFL.SC.Y:0023.000000T0000Z-051208T1900Z/~~

~~COASTAL WATERS FROM JUPITER INLET TO DEERFIELD BEACH, FL OUT 60 NM~~

~~309-AM-EST-THU-DEC-8-2005~~

~~...SMALL CRAFT ADVISORY NOW IN EFFECT UNTIL 2 PM EST THIS AFTERNOON....TODAY...EAST WINDS AROUND 20 KNOTS BECOMING SOUTHEAST 10 TO 15 KNOTS IN THE AFTERNOON. SEAS 6 TO 8 FEET SUBSIDING TO 4 TO 6 FEET IN THE AFTERNOON. INTRACOASTAL WATERS CHOPPY IN EXPOSED AREAS. SHOWERS LIKELY THROUGH THE DAY. SLIGHT CHANCE OF THUNDERSTORMS IN THE AFTERNOON.~~

.TONIGHT...SOUTH WINDS 10 TO 15 KNOTS. SEAS 2 TO 4 FEET SUBSIDING TO 2 FEET OR LESS AFTER MIDNIGHT. ~~INTRACOASTAL WATERS A LIGHT CHOP.~~ SLIGHT CHANCE OF THUNDERSTORMS EARLY IN THE EVENING. SLIGHT CHANCE OF SHOWERS THROUGH THE NIGHT. .FRIDAY...SOUTHWEST WINDS 5 TO 10 KNOTS BECOMING NORTHWEST 10 TO 15 KNOTS IN THE AFTERNOON. SEAS 2 TO 3 FEET. ~~NTRACOASTAL WATERS A LIGHT CHOP.~~ SLIGHT CHANCE OF SHOWERS.

.FRIDAY NIGHT...NORTHEAST WINDS 10 TO 15 KNOTS DECREASING TO 5 TO 10 KNOTS AFTER MIDNIGHT. SEAS 6 TO 8 FEET SUBSIDING TO 2 TO 4 FEET AFTER MIDNIGHT. ~~INTRACOASTAL WATERS A MODERATE CHOP.~~ SLIGHT CHANCE

OF SHOWERS. .SATURDAY...NORTHEAST WINDS 5 TO 10 KNOTS. SEAS 2 TO 3 FEET. ~~INTRACOASTAL WATERS A LIGHT CHOP.~~ CHANCE OF SHOWERS. .SUNDAY...SOUTHWEST WINDS 5 TO 10 KNOTS. SEAS 2 FEET OR LESS. ~~INTRACOASTAL WATERS A LIGHT CHOP.~~ SLIGHT CHANCE OF SHOWERS.

.MONDAY...NORTH WINDS 20 TO 25 KNOTS. SEAS 3 TO 5 FEET NEAR SHORE AND UP TO 6 TO 8 FEET IN THE GULF STREAM. ~~NTRACOASTAL WATERS A MODERATE CHOP.~~

\$\$

AMZ651-671-081530-

/O.CAN.KMFL.SW.Y.0014.000000T0000Z-051208T1000Z/

/O.ROU.KMFL.MA.F.0000.000000T0000Z-000000T0000Z/

COASTAL WATERS FROM DEERFIELD BEACH TO OCEAN REEF, FL OUT 20 NM WATERS FROM DEERFIELD BEACH TO OCEAN REEF, FL EXTENDING FROM 20 NM TO THE TERRITORIAL WATERS OF THE BAHAMAS-(Can also refer to this area as The Bahama Banks) 309 AM EST THU DEC 8 2005

...SMALL CRAFT SHOULD EXERCISE CAUTION...

.TODAY...EAST WINDS 15 TO 20 KNOTS BECOMING SOUTHEAST 10 TO 15 KNOTS IN THE AFTERNOON. SEAS 4 TO 6 FEET SUBSIDING TO 2 TO 4 FEET IN THE AFTERNOON. ~~INTRACOASTAL WATERS CHOPPY IN EXPOSED AREAS.~~ SLIGHT CHANCE OF SHOWERS.

.TONIGHT...SOUTHEAST WINDS AROUND 10 KNOTS. SEAS 2 TO 4 FEET SUBSIDING TO 2 FEET OR LESS AFTER MIDNIGHT. ~~INTRACOASTAL WATERS A LIGHT CHOP.~~ SLIGHT CHANCE OF SHOWERS.

.FRIDAY...SOUTH WINDS 5 TO 10 KNOTS BECOMING WEST 10 TO 15 KNOTS IN THE AFTERNOON. SEAS 2 FEET OR LESS. ~~INTRACOASTAL WATERS A LIGHT CHOP.~~ SLIGHT CHANCE OF SHOWERS. .FRIDAY NIGHT...NORTHEAST WINDS 10 TO 15 KNOTS. SEAS 6 TO 8 FEET SUBSIDING TO 2 TO 4 FEET AFTER MIDNIGHT. ~~INTRACOASTAL~~

~~WATERS A MODERATE CHOP. SLIGHT CHANCE OF SHOWERS.  
.SATURDAY...EAST WINDS 5 TO 10 KNOTS. SEAS 2 TO 3 FEET.  
INTRACOASTAL WATERS A LIGHT CHOP. CHANCE OF SHOWERS.  
.SUNDAY...SOUTH WINDS 5 TO 10 KNOTS. SEAS 2 FEET OR LESS.  
INTRACOASTAL WATERS A LIGHT CHOP. SLIGHT CHANCE OF  
SHOWERS. .MONDAY...NORTH WINDS 15 TO 20 KNOTS. SEAS 3 TO 5  
FEET NEAR SHORE AND UP TO 6 TO 8 FEET IN THE GULF STREAM.  
INTRACOASTAL WATERS A MODERATE CHOP.~~

~~\$\$~~

~~AMZ630-081530-/O.ROU.KMFL.MA.F.0000.000000T0000Z-  
000000T0000Z/BISCAYNE BAY-  
309 AM EST THU DEC 8 2005~~

~~...SMALL CRAFT SHOULD EXERCISE CAUTION IN EXPOSED AREAS...  
.TODAY...EAST WINDS 15 TO 20 KNOTS BECOMING SOUTHEAST 10  
TO 15 KNOTS IN THE AFTERNOON. BAY WATERS CHOPPY IN  
EXPOSED AREAS. SLIGHT CHANCE  
OF SHOWERS. .TONIGHT...SOUTHEAST WINDS 5 TO 10 KNOTS. BAY  
WATERS A LIGHT CHOP. SLIGHT CHANCE OF SHOWERS.  
.FRIDAY...SOUTH WINDS AROUND 5 KNOTS BECOMING WEST IN THE  
AFTERNOON. BAY WATERS A LIGHT CHOP. SLIGHT CHANCE OF  
SHOWERS. .FRIDAY NIGHT...NORTHEAST WINDS 5 TO 10 KNOTS. BAY  
WATERS A LIGHT CHOP. SLIGHT CHANCE OF SHOWERS.  
.SATURDAY...EAST WINDS 5 TO 10 KNOTS. BAY WATERS A LIGHT  
CHOP. CHANGE OF SHOWERS.  
.SUNDAY...SOUTH WINDS 5 TO 10 KNOTS. BAY WATERS A LIGHT  
CHOP. SLIGHT CHANCE OF SHOWERS. .MONDAY...NORTH WINDS 15  
TO 20 KNOTS. BAY WATERS A MODERATE CHOP.~~

~~\$\$~~

~~GMZ656-657-676-081530-  
/O.ROU.KMFL.MA.F.0000.000000T0000Z-000000T0000Z/  
COASTAL WATERS FROM CHOKOLOSKEE TO BONITA BEACH, FL OUT  
20 NM- COASTAL WATERS FROM EAST CAPE SABLE TO  
CHOKOLOSKEE, FL OUT 20 NM-  
GULF WATERS FROM CHOKOLOSKEE TO BONITA BEACH, FL  
EXTENDING FROM 20 TO 60 NM- 309 AM EST THU DEC 8 2005~~

~~...SMALL CRAFT SHOULD EXERCISE CAUTION WELL OFFSHORE...  
.TODAY...EAST WINDS 15 TO 20 KNOTS BECOMING SOUTHEAST 5  
TO 10 KNOTS IN THE AFTERNOON. NEAR SHORE...SEAS 2 TO 3 FEET  
SUBSIDING TO 2 FEET OR LESS IN THE AFTERNOON. WELL  
OFFSHORE...SEAS 4 TO 6 FEET SUBSIDING TO 2 TO 4 FEET IN THE  
AFTERNOON. BAY AND INLAND WATERS A MODERATE CHOP. SLIGHT  
CHANGE OF SHOWERS. .TONIGHT...SOUTHEAST WINDS 5 TO 10  
KNOTS. SEAS 2 FEET OR LESS. BAY AND INLAND WATERS A LIGHT~~

CHOP. SLIGHT CHANGE OF SHOWERS. .FRIDAY...SOUTH WINDS 5 KNOTS BECOMING NORTHWEST IN THE AFTERNOON. SEAS 2 FEET OR LESS. BAY AND INLAND WATERS A LIGHT CHOP. SLIGHT CHANGE OF SHOWERS. .FRIDAY NIGHT...NORTHEAST WINDS 10 TO 15 KNOTS. SEAS 2 FEET OR LESS NEAR SHORE AND UP TO 2 TO 4 FEET WELL OFFSHORE. BAY AND INLAND WATERS A LIGHT CHOP. SLIGHT CHANGE OF SHOWERS. .SATURDAY...NORTHEAST WINDS 5 TO 10 KNOTS. SEAS 2 FEET OR LESS. BAY AND INLAND WATERS A LIGHT CHOP. SLIGHT CHANGE OF SHOWERS. .SUNDAY...SOUTHWEST WINDS 10 TO 15 KNOTS. SEAS 2 FEET OR LESS. BAY AND INLAND WATERS A MODERATE CHOP. SLIGHT CHANGE OF SHOWERS. .MONDAY...NORTH WINDS 20 TO 25 KNOTS. SEAS 2 TO 4 FEET. BAY AND INLAND WATERS A MODERATE CHOP.

\$\$

AMZ610-081530-----/O.ROU.KMFL.MA.F.0000.000000T0000Z-000000T0000Z/LAKE OKEECHOBEE-309 AM EST THU DEC 8 2005  
...SMALL CRAFT SHOULD EXERCISE CAUTION...

.TODAY...EAST WINDS 15 TO 20 KNOTS BECOMING SOUTHEAST 10 TO 15 KNOTS IN THE AFTERNOON. GUSTS UP TO 28 KNOTS. LAKE WATERS CHOPPY. CHANGE OF SHOWERS THROUGH THE DAY. SLIGHT CHANGE OF THUNDERSTORMS IN THE AFTERNOON. .TONIGHT...SOUTH WINDS 5 TO 10 KNOTS. LAKE WATERS A LIGHT CHOP. SLIGHT CHANGE OF THUNDERSTORMS EARLY IN THE EVENING. SLIGHT CHANGE OF SHOWERS THROUGH THE NIGHT. PATCHY FOG IN THE LATE EVENING AND OVERNIGHT. .FRIDAY...SOUTHWEST WINDS 5 TO 10 KNOTS BECOMING NORTHWEST IN THE AFTERNOON. LAKE WATERS A LIGHT CHOP. PATCHY FOG EARLY IN THE MORNING. SLIGHT CHANGE OF SHOWERS THROUGH THE DAY. .FRIDAY NIGHT...NORTHEAST WINDS 10 TO 15 KNOTS DECREASING TO 5 TO 10 KNOTS AFTER MIDNIGHT. LAKE WATERS A MODERATE CHOP. SLIGHT CHANGE OF SHOWERS. .SATURDAY...NORTHEAST WINDS 5 TO 10 KNOTS. LAKE WATERS A LIGHT CHOP. SLIGHT CHANGE OF SHOWERS. .SUNDAY...WEST WINDS 5 TO 10 KNOTS. LAKE WATERS A LIGHT CHOP. SLIGHT CHANGE OF SHOWERS.

.MONDAY...NORTH WINDS 15 TO 20 KNOTS. LAKE WATERS CHOPPY.

\$\$

# APPENDIX B

## INTERNET WX SITES

Here is a list of Internet sites to use for gathering the weather forecasts. These sites will change from time to time. Changes will be posted on the WRCC Web site. If you notice any dead links, please forward the information to the Weather Coordinator.

### One Source For All Products

<http://www.nws.noaa.gov/om/marine/marinewxi.htm>

<http://www.srh.noaa.gov/mfl/marine.php>

<http://www.srh.noaa.gov/key/HTML/marine.html>

### Tropical Weather Outlook & Advisories

Primary:

<http://www.nhc.noaa.gov/>

Alternate:

<http://www.hwn.org>

<http://www.wunderground.com>

<http://www.srh.noaa.gov/mlb/marineweather.html>

### Caribbean & SW N Atlantic Offshore

Primary:

<http://twister.sbs.ohio-state.edu/text/marine/offshore/FZNT23.KNHC>

<http://www.srh.noaa.gov/mfl/marine.php>

<http://www.srh.noaa.gov/data/MIA/OFF/MIAOFFNT3.1.txt>

Alternate:

<http://www.wunderground.com>

<http://www.srh.noaa.gov/mlb/marineweather.html>

<http://weather.noaa.gov/>

## **Gulf of Mexico Offshore**

Primary:

<http://www.srh.noaa.gov/data/NHC/OFFNT4>

<http://twister.sbs.ohio-state.edu/text/marine/offshore/FZNT24.KNHC>

<http://www.srh.noaa.gov/productview.php?pil=OFFNT4>

## **South Florida Coastal**

Primary:

<http://www.srh.noaa.gov/mfl/marine.php>

<http://weather.noaa.gov/pub/data/raw/fz/fzus52.kmfl.cwf.mfl.txt>

<http://www.srh.noaa.gov/data/MIA/CWF/MIACWFMI.1.txt>

<http://twister.sbs.ohio-state.edu/text/marine/nearshore/>

[FZUS52.KMFL](http://www.srh.noaa.gov/mfl/marine.php)

Alternate:

<http://www.nws.noaa.gov/om/marine/marinewxi.htm>

<http://www.nws.noaa.gov/om/marine/zone/wrdoffmz.htm>

<http://www.wunderground.com>

<http://www.srh.noaa.gov/mlb/marineweather.html>

<http://weather.noaa.gov/>

<http://weather.noaa.gov/cgi-bin/fmtbltn.pl?file=forecasts/marine/>

[coastal/am/amz650.txt](http://www.srh.noaa.gov/mfl/marine.php)

## **Other Sources**

<http://www1.accuweather.com/adchurr/index?go=1&partner=accuweather>

<http://www.accuweather.com/>

[forecast.asp?zipcode=32606&partner=accuweather](http://www1.accuweather.com/adchurr/index?go=1&partner=accuweather)

<http://www.hpc.ncep.noaa.gov/html/sfc2.shtml>

<http://weather.noaa.gov/cgi-bin/fmtbltn.pl?file=forecasts/marine/coastal/am/amz650.txt>

<http://hurricane.terrapin.com/>

<http://www.ghcc.msfc.nasa.gov/GOES/goeseastconusir.html>

<http://www.nhc.noaa.gov/>

<http://www.srh.noaa.gov/mlb/marineweather.html>

<http://www.srh.noaa.gov/radar/latest/DS.p19r0/si.kvax.shtml>

<http://www.nws.noaa.gov/>

<http://weather.noaa.gov/>

<http://www.srh.noaa.gov/>

<http://www.srh.noaa.gov/tlh/marine/>

<http://twister.sbs.ohio-state.edu/>  
<http://twister.sbs.ohio-state.edu/noframe.html>  
<http://www.hwn.org/>  
<http://www.nws.noaa.gov/om/marine/zone/wrdoffmz.htm>  
<http://www.weather.com/weather/local/32615?lsw=32615&lwsa=WeatherLocalUndeclared>  
<http://www.wesh.com/index.html>  
[http://weather.yahoo.com/forecast/Gainesville\\_FL\\_US\\_f.html](http://weather.yahoo.com/forecast/Gainesville_FL_US_f.html)  
<http://www.nws.noaa.gov/om/marine/atlantic.htm>  
<http://weather.noaa.gov/cgi-bin/fmtbltn.pl?file=raw/fz/fzus52.kmfl.cwf.mfl.txt>  
<http://weather.noaa.gov/>  
<http://weather.noaa.gov/pub/data/raw/fz/fzus52.kmfl.cwf.mfl.txt>  
<http://www.wunderground.com/MAR/AM/630.html>  
<http://www.srh.noaa.gov/productview.php?pil=CWFMFL&max=3>  
<http://weather.noaa.gov/pub/data/raw/fz/fzus52.kmfl.cwf.mfl.txt>  
<http://www.nws.noaa.gov/om/marine/marinewxi.htm>



***Hurricane Flags Flying. Hurricane Rita, 2005 Boot Key Harbor***

# APPENDIX C

## HURRICANE TERMINOLOGY

During the Atlantic basin hurricane season, which runs from June 1st through November 30th, you may be asked to clarify some hurricane terms. Common terms and definitions for the Saffir-Simpson Scale and Tropical Storm/Hurricane Watches and Warnings are listed below.

### Saffir-Simpson Hurricane Scale

CATEGORY	PRESSURE MB	WINDS MPH	SURGE FT
Depression	-----	<39	-----
Tropical Storm	-----	39-73	-----
Hurricane 1	> 980	74-95	4-5
Hurricane 2	965-980	96-110	6-8
Hurricane 3	945-965	111-130	9-12
Hurricane 4	920-945	131-155	13-18
Hurricane 5	< 920	> 155	> 18

### Tropical Storm/Hurricane Terminology

Generally speaking you will leave out the definitions of what a watch or warning is when reading a Tropical Storm or Hurricane advisory. In the event that you are asked to define what these advisories mean I have included their definitions.

#### Hurricane Warning

A hurricane warning means that hurricane conditions are expected within the warning area within the next 24 hours. Preparations to protect life and property should be rushed to completion.

#### Hurricane Watch

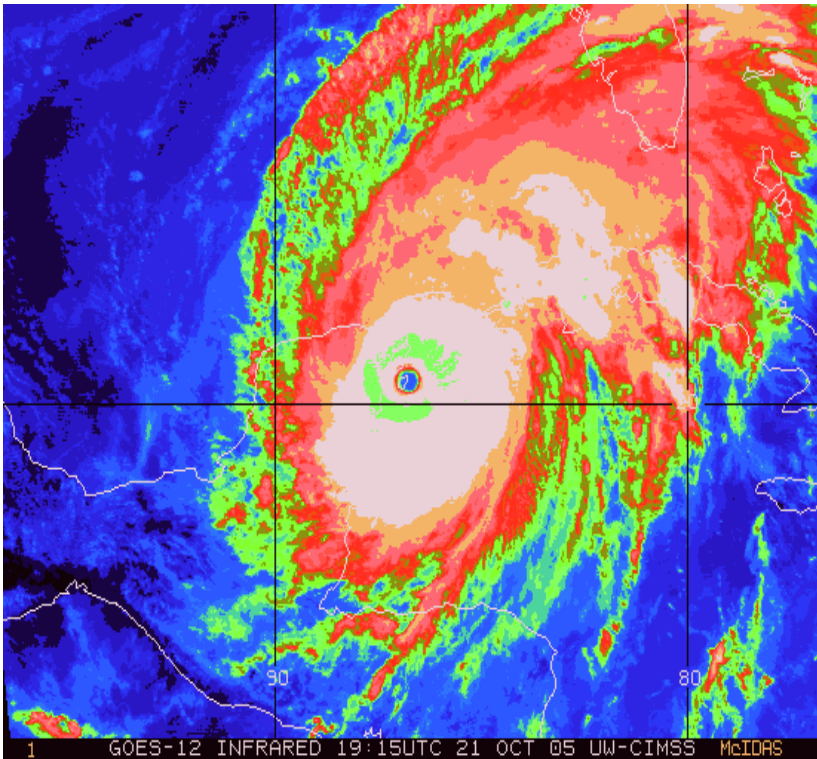
A hurricane watch means that hurricane conditions are possible within the watch area...generally within 36 hours.

## **Tropical Storm Warning**

A tropical storm warning means that tropical storm conditions are expected within the warning area within the next 24 hours.

## **Tropical Storm Watch**

A tropical storm watch means that tropical storm conditions are possible within the watch area...generally within 36 hours.



***Hurricane Wilma Over The Yucatan Penninsula, October 2005***

# ACKNOWLEDGEMENTS

This WRCC Weather Reporters Guide would not have been possible without the kind assistance of the following people;

Ron Knaggs, N1GYX, Commodore, Tom Rader, K4WJC, Rear Commodore, Jean Freeman, KC4BGQ, Sunshine Fund Coordinator, Bill Boyle, N4UMS, WRCC Webmaster, Terry Palmer, K1LCH, Sam Ulbing, N4UAU, Naoma Lowe, N4QIW, Drake Wilson, K04IV and Jeanie Schreiber, Secretary/Treasurer.

Fair waves and following seas!

Marti Brown, KF4TRG, Vice Commodore 2006

